

Anna Ewers

PORTFOLIO

HEIGHT

174 CM / 5'8" 1/2

BUST

87 CM / 34" 1/2

WAIST

57 CM / 22" 1/2

HIPS

89 CM / 35"

SHOE

39 / 8 1/2

HAIR

BLOND

EYES

BROWN



WOMEN

PARIS

3 RUE MEYERBEER, 4TH FLOOR - 75009 PARIS
+33 (0)1 55 35 22 22 - WWW.WOMENMANAGEMENT.FR

12/05/2021

THE NONCHALANT

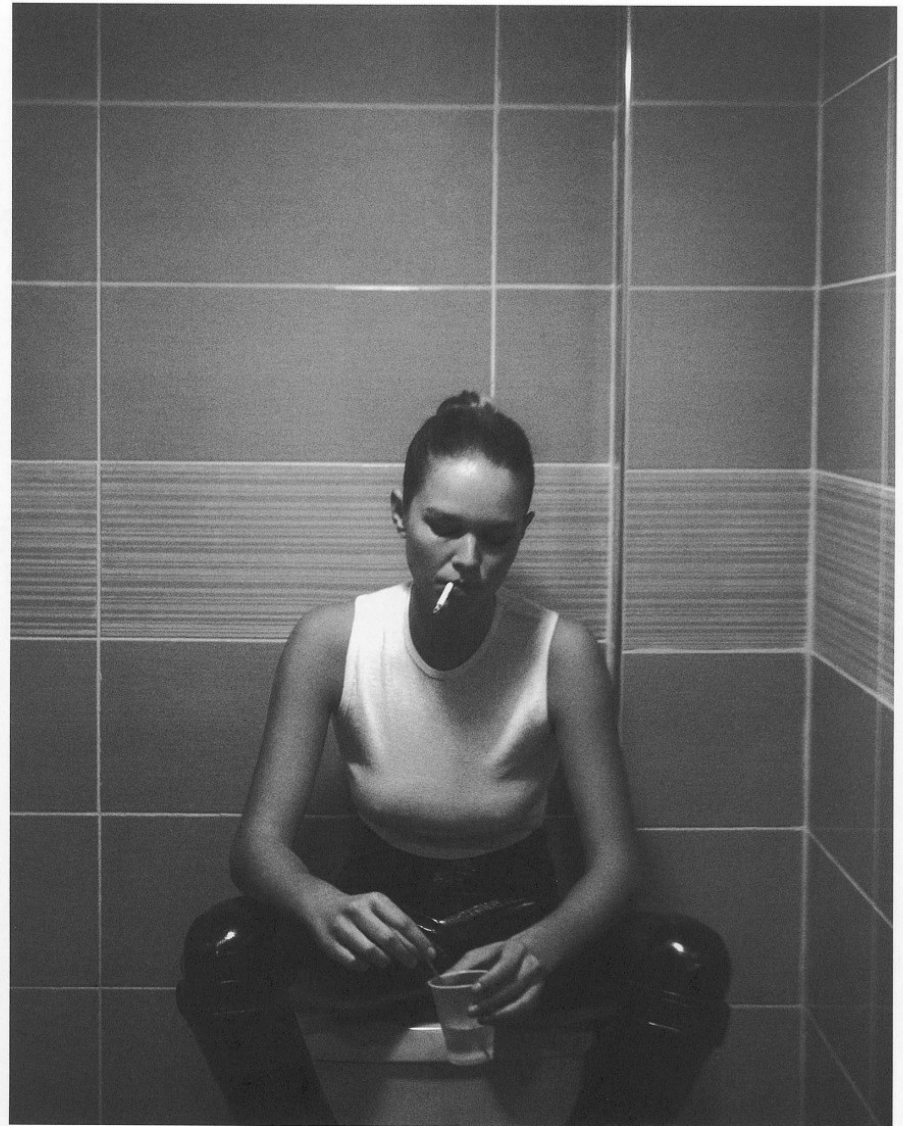
Anna wears a rayon top, Welldone. Viscose trousers, Courrèges. *Photography by Robin Galiegue. Styling by Malina Joseph Gilchrist.*



12/05/2021

THE ROCK AND ROLL

Anna wears a cotton tank top, Los Angeles Apparel. Viscose trousers, Courrèges. *Photography by Robin Galiegue. Styling by Malina Joseph Gilchrist.*



HAIR BY LUCAS WELCHER @ FINE. MAKEUP BY CHLOE L. @ MA - GROUP. MANICURE BY FRI HANNA @ FINE.
HAIR BY LUCAS WELCHER @ FINE. MAKEUP BY CHLOE L. @ MA - GROUP. MANICURE BY FRI HANNA @ FINE.

WOMEN

PARIS

3 RUE MEYERBEER, 4TH FLOOR - 75009 PARIS
+33 (0)1 55 35 22 22 - WWW.WOMENMANAGEMENT.FR



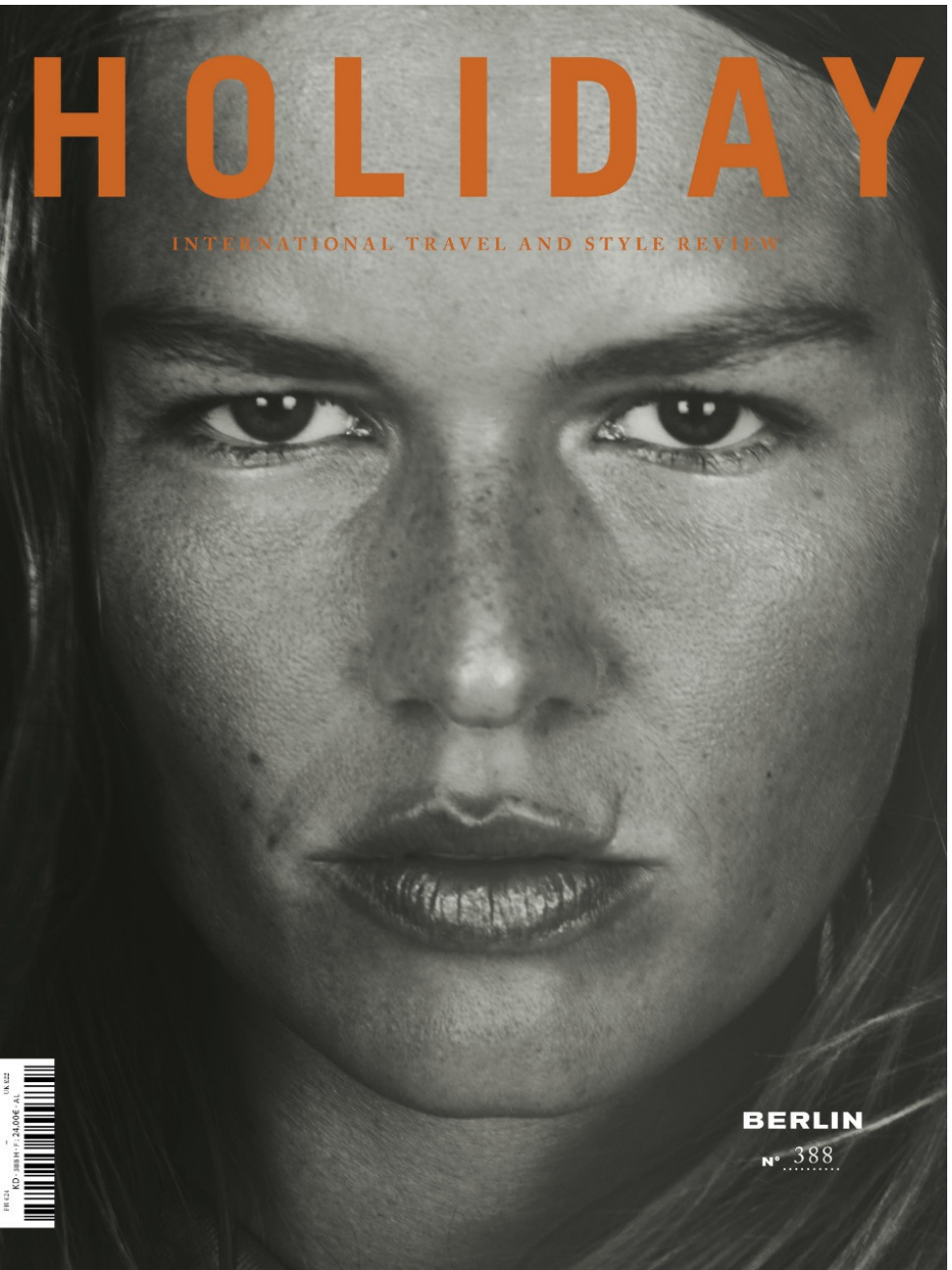
THE OB SESS IONS

Photography by Robin Galiegue.
Styling by Elodie David Touboul and Malina Joseph Gilchrist.

WOMEN

PARIS

3 RUE MEYERBEER, 4TH FLOOR - 75009 PARIS
+33 (0)1 55 35 22 22 - WWW.WOMENMANAGEMENT.FR



HOLIDAY

INTERNATIONAL TRAVEL AND STYLE REVIEW



BERLIN
N° 388

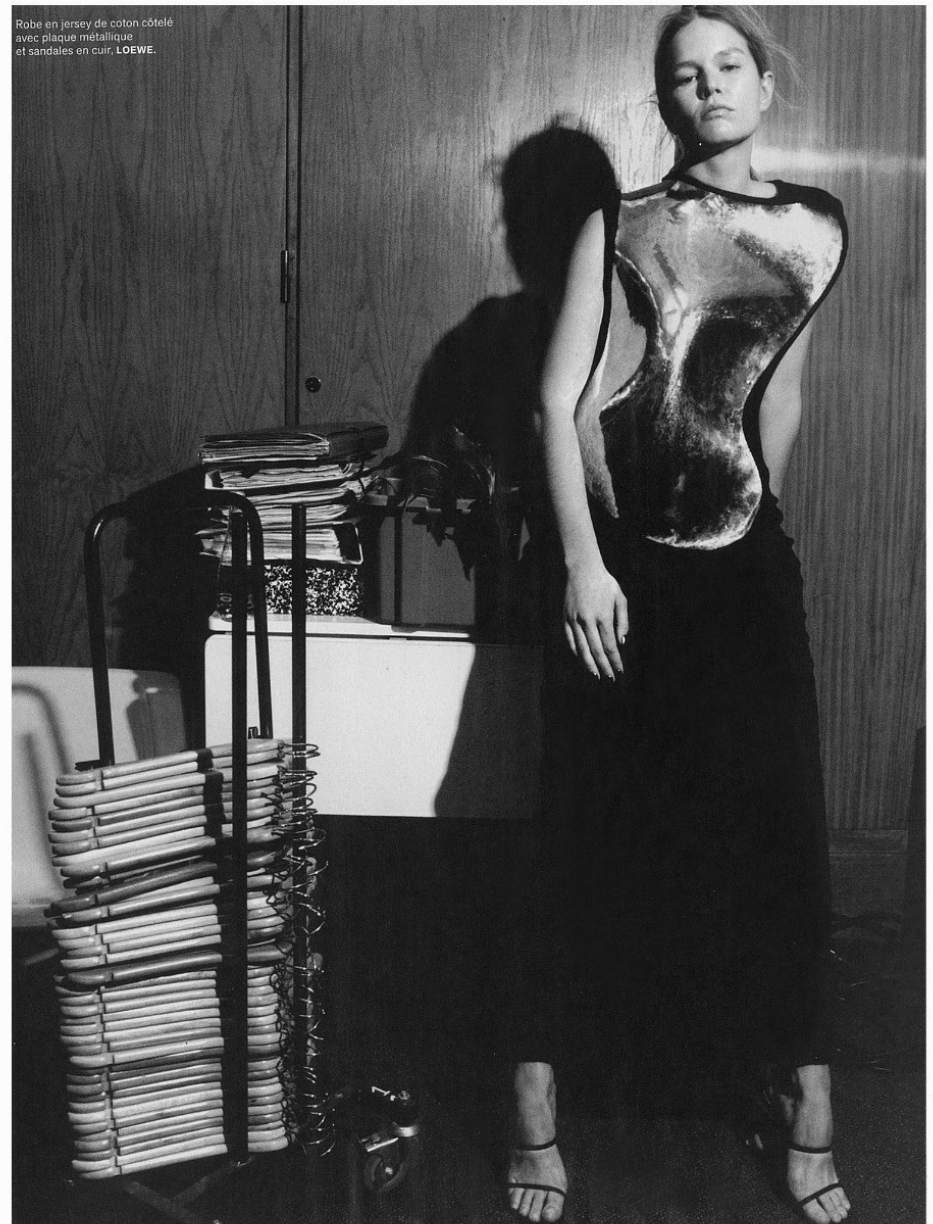
WOMEN

PARIS

3 RUE MEYERBEER, 4TH FLOOR - 75009 PARIS
+33 (0)1 55 35 22 22 - WWW.WOMENMANAGEMENT.FR



Robe bustier à taille coulissée et
chaussettes en cuir de veau, **HERMÈS**.
Escarpins Kate, en cuir de veau verni,
CHRISTIAN LOUBOUTIN.



Robe en jersey de coton côtelé
avec plaque métallique
et sandales en cuir, **LOEWE**.

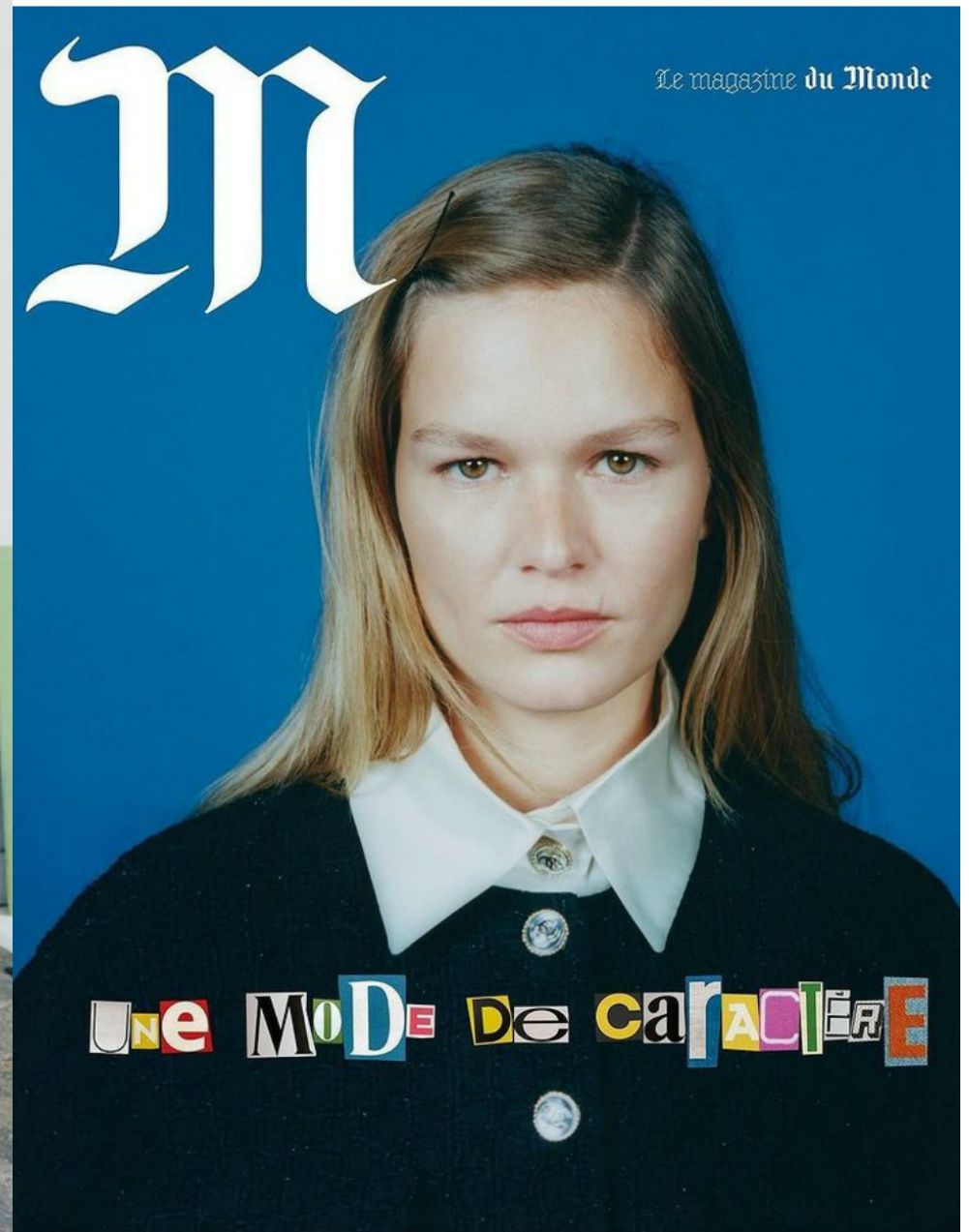
WOMEN

PARIS

3 RUE MEYERBEER, 4TH FLOOR - 75009 PARIS
+33 (0)1 55 35 22 22 - WWW.WOMENMANAGEMENT.FR



WOMEN



PARIS

3 RUE MEYERBEER, 4TH FLOOR - 75009 PARIS
+33 (0)1 55 35 22 22 - WWW.WOMENMANAGEMENT.FR



CHANEL

WOMEN

PARIS

3 RUE MEYERBEER, 4TH FLOOR - 75009 PARIS
+33 (0)1 55 35 22 22 - WWW.WOMENMANAGEMENT.FR



WOMEN



PARIS

3 RUE MEYERBEER, 4TH FLOOR - 75009 PARIS
+33 (0)1 55 35 22 22 - WWW.WOMENMANAGEMENT.FR



WOMEN

PARIS

3 RUE MEYERBEER, 4TH FLOOR - 75009 PARIS
+33 (0)1 55 35 22 22 - WWW.WOMENMANAGEMENT.FR



WOMEN



PARIS

3 RUE MEYERBEER, 4TH FLOOR - 75009 PARIS
+33 (0)1 55 35 22 22 - WWW.WOMENMANAGEMENT.FR



WOMEN



PARIS

3 RUE MEYERBEER, 4TH FLOOR - 75009 PARIS
+33 (0)1 55 35 22 22 - WWW.WOMENMANAGEMENT.FR



ISABEL MARANT

WOMEN

PARIS

3 RUE MEYERBEER, 4TH FLOOR - 75009 PARIS
+33 (0)1 55 35 22 22 - WWW.WOMENMANAGEMENT.FR



WOMEN



PARIS

3 RUE MEYERBEER, 4TH FLOOR - 75009 PARIS
 +33 (0)1 55 35 22 22 - WWW.WOMENMANAGEMENT.FR

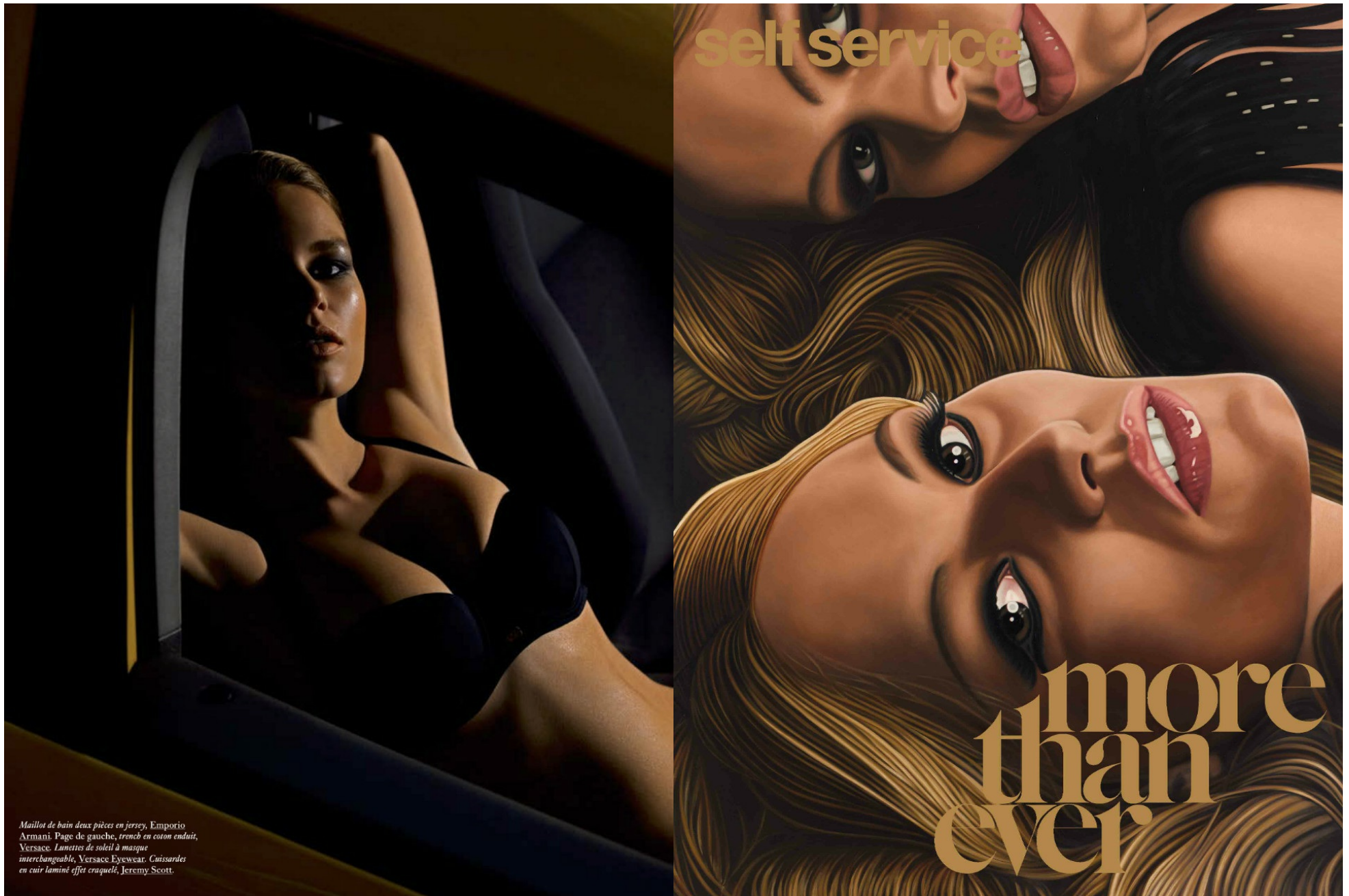


Photography by Ezra Petronio. Styling by Marie Chaix.

WOMEN

PARIS

3 RUE MEYERBEER, 4TH FLOOR - 75009 PARIS
+33 (0)1 55 35 22 22 - WWW.WOMENMANAGEMENT.FR



Maillots de bain deux pièces en jersey, Emporio Armani. Page de gauche, trench en coton enduit, Versace. Lunettes de soleil à masque interchangeable, Versace Eyewear. Cuissardes en cuir laminé effet craquelé, Jeremy Scott.

WOMEN

PARIS

3 RUE MEYERBEER, 4TH FLOOR - 75009 PARIS
+33 (0)1 55 35 22 22 - WWW.WOMENMANAGEMENT.FR



WOMEN



PARIS

3 RUE MEYERBEER, 4TH FLOOR - 75009 PARIS
+33 (0)1 55 35 22 22 - WWW.WOMENMANAGEMENT.FR



WOMEN

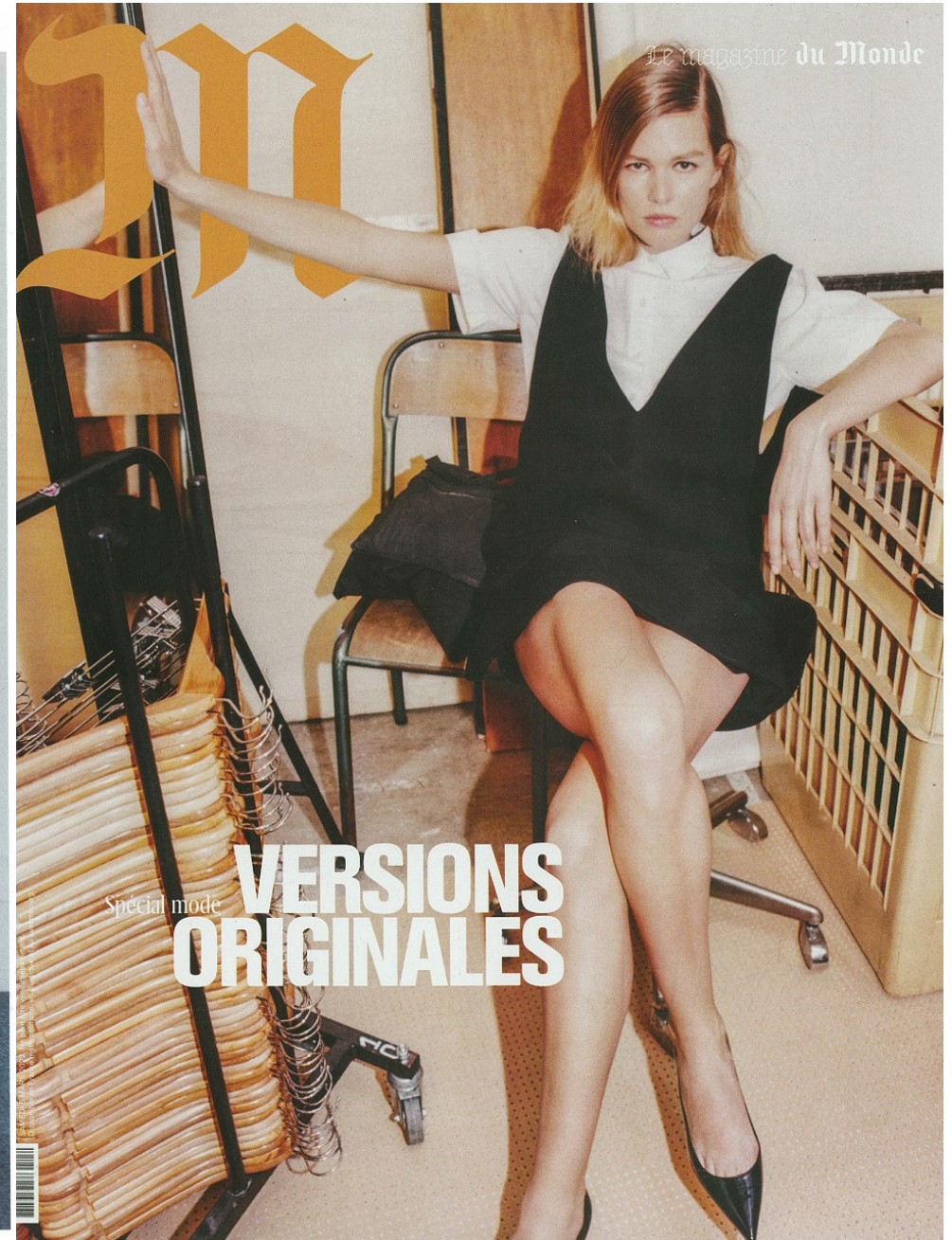


PARIS

3 RUE MEYERBEER, 4TH FLOOR - 75009 PARIS
+33 (0)1 55 35 22 22 - WWW.WOMENMANAGEMENT.FR



Robe plissée en Lurex et sandales à plateformes en cuir. JUNYA WATANABE.



WOMEN

PARIS

3 RUE MEYERBEER, 4TH FLOOR - 75009 PARIS
+33 (0)1 55 35 22 22 - WWW.WOMENMANAGEMENT.FR



BAZAAR

WOMEN

PARIS

3 RUE MEYERBEER, 4TH FLOOR - 75009 PARIS
+33 (0)1 55 35 22 22 - WWW.WOMENMANAGEMENT.FR